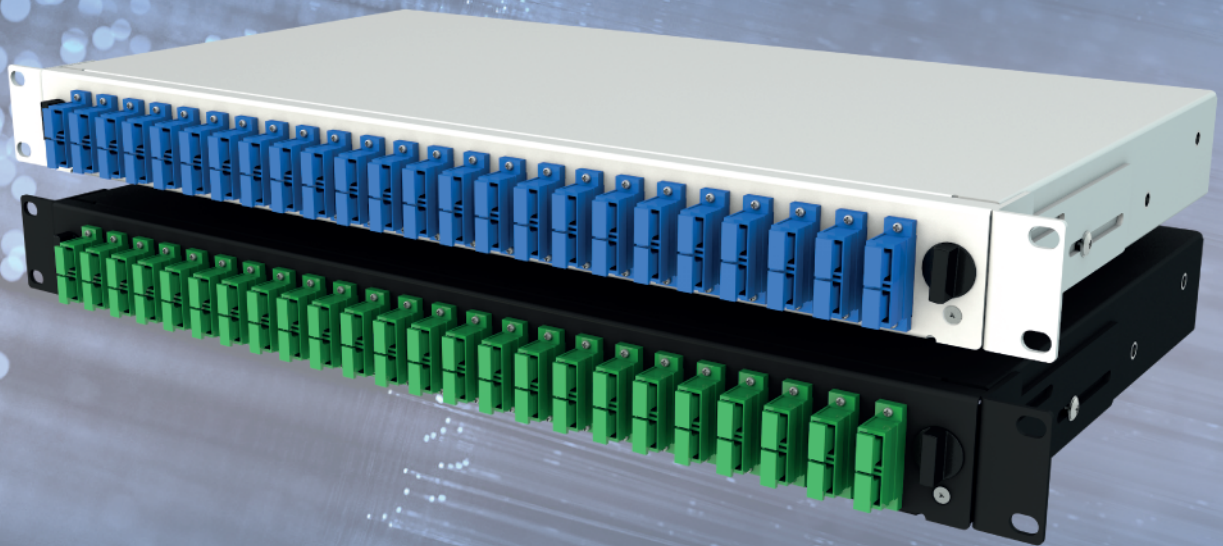


# alfafonet<sup>®</sup>

Complete Connectivity Solutions




## OPTISLIDE 1RU FIBER OPTIC PATCH / SPLICE PANEL

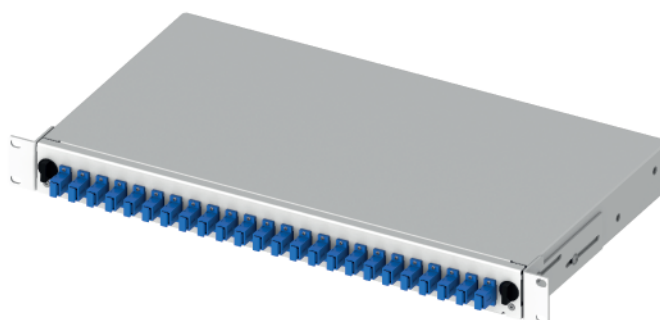
**FIBER OPTIC PATCH PANELS**  
OptiSlide


## OPTISLIDE 1RU FIBER OPTIC PATCH/SPLICE PANEL


	Product Family
	Mechanical Slide

<input type="checkbox"/>	Standarts
<input type="checkbox"/>	19"
<input type="checkbox"/>	1 Rack Unit

Protection Rating	
	IP 10



	H	44 mm
	W	434 mm
	D	243 mm

Available Colors:	
	Light Grey (RAL7035)
	Black (RAL9005)

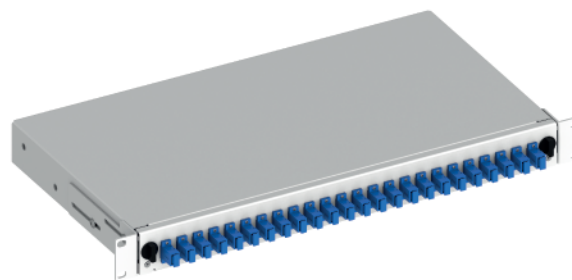
Weight		
	Net	2,3 kg
	Gross	2,830 kg

### PRODUCT OVERVIEW

The OptiSlide 1RU sliding patch panel system in its basic form is supplied with the panels unloaded without adaptors ready for you to install the adaptor of your choice. The panel can also be pre-loaded complete with the required adaptor and simple splice management kit, or preloaded with pigtails to meet your project needs. The tray is locked in place with two simple plastic quarter turn lock to operate when fully extended the tray is designed to lower to 45°, or move the tray to the side and it will lock to lower only 10°. This provides the perfect working platform for simple installation or easy maintenance and access even after the panel is installed in the rack. This solution allows for easy access to the front patch cords as well as the splice trays and pigtails after being pulled out. Standard panels are available empty for complete field configuration, half-loaded with adaptor plates for field termination and cable assembly installation, or stubbed with a factory-installed cable assembly of a user specified length.

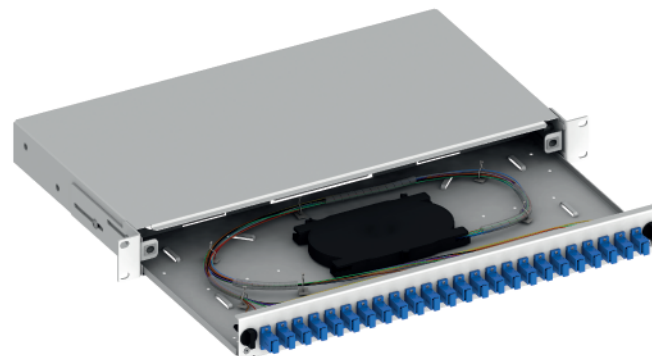
#### Features

- › Up to 48 fibres in 1RU
- › Printed port numbers on the front plate
- › Available with different front plates (sold separately to reduce stock value) for all type of connectors
- › Adjustable depth in rack
- › Rear cable entry options
- › Rear Assembly option to Rack
- › Light in weight and robust structure
- › Different Splice tray assembly option
- › Removable Adapter Plates



#### Specifications

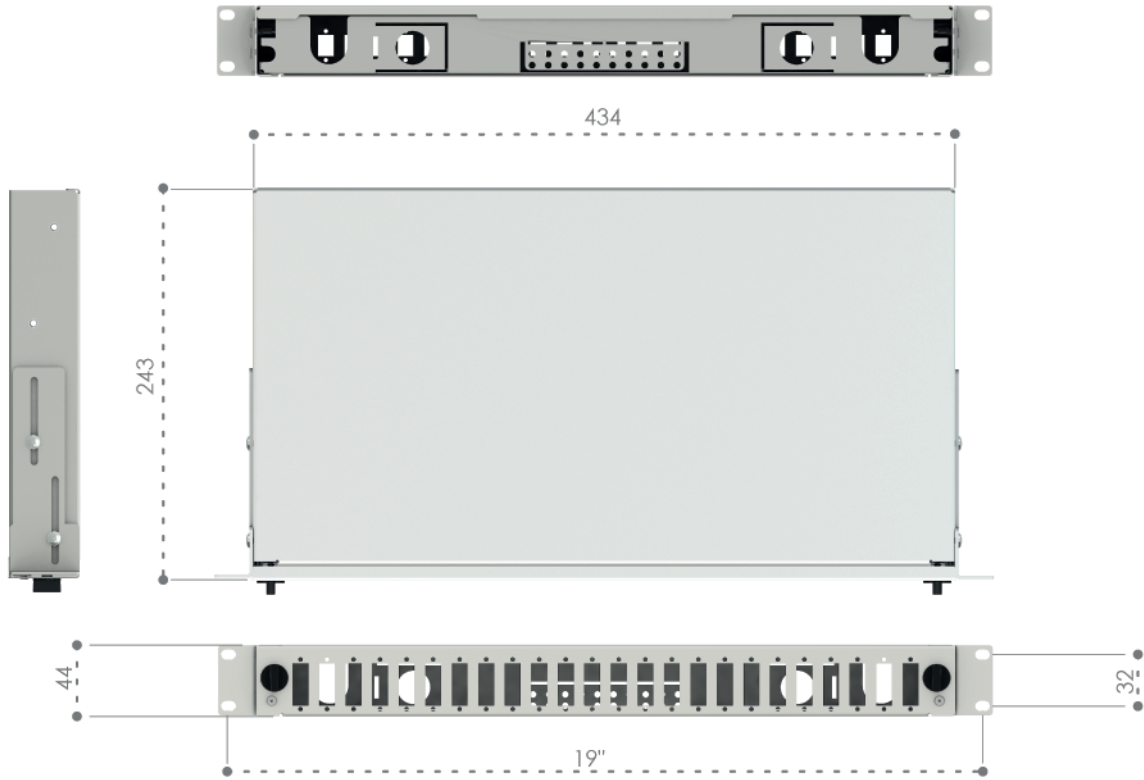
- › Cold Rolled Steel Construction
- › Durable textured powder coat finish available in Black (RAL9005) or Light Grey (RAL7035)
- › Universal 19" rack compatibility
- › Special Plastic Quarter Turn lock for tray
- › Cable Entry 21mm (2pcs),
- › Cable Entry 23mm (2pcs)
- › Compliant to RoHS



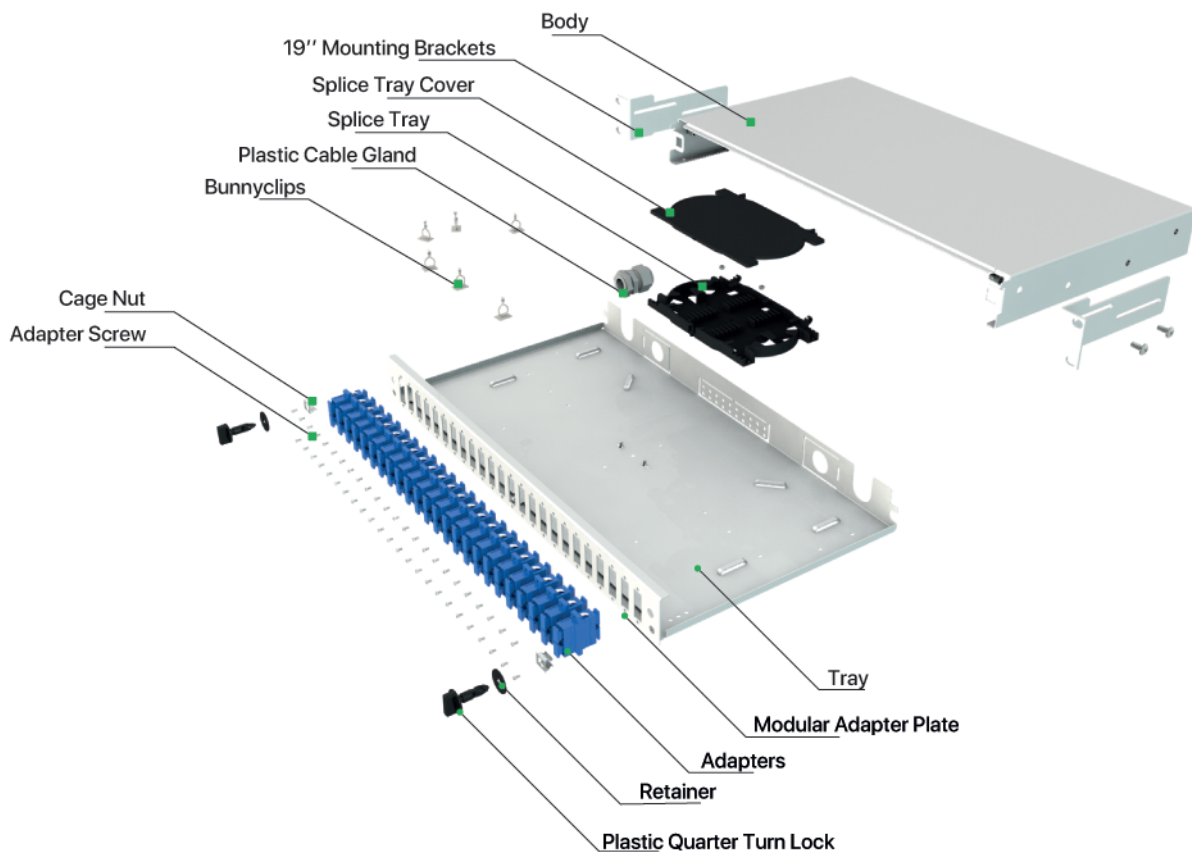


**OPTISLIDE 1RU FIBER OPTIC PATCH/SPLICE PANEL**

Dimensions



Exploded View

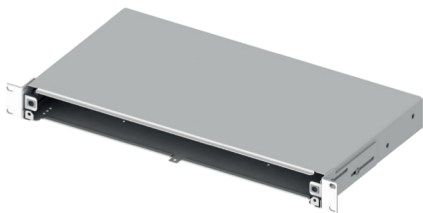


## OPTISLIDE 1RU FIBER OPTIC PATCH/SPLICE PANEL

### Ordering Options

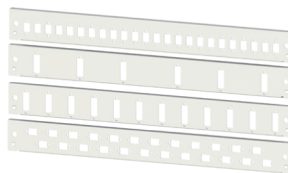
	12 ST or 12 FC (D-hole) 1RU Front Plate	102001.01-CC
	24 ST or 24 FC (D-hole) 1RU Front Plate	102001.02-CC
	24 LC Duplex or 24 E2000 Simplex or 24 SC Simplex 1RU Front Plate	102001.03-CC
	24 MTP or 24 MPO Adapter Vertical 1RU Front Plate	102001.04-CC
	24 LC Duplex Square-Cut 1RU Front Plate	102001.05-CC
	12 LC Duplex Square-Cut 1RU Front Plate	102001.06-CC
	6 SC Duplex or 6 LC Quad Vertical 1RU Front Plate	102001.07-CC
	12 SC Duplex or 12 LC Quad Horizontally Shifted 1RU Front Plate	102001.08-CC
	12 SC Duplex or 12 LC Quad Vertical 1RU Front Plate	102001.09-CC
	6 SC Duplex or 6 LC Quad Horizontal 1RU Front Plate	102001.10-CC
	24 SC Duplex or 24 LC Quad Vertical 1RU Front Plate	102001.11-CC
	24 LC Duplex or 24 E2000 Simplex or 24 SC Simplex Horizontally Shifted 1RU Front Plate	102001.12-CC
	12 Keystone + 12 SC Duplex Vertical (LC Quad) 1RU Front Plate	102001.13-CC
	12 Keystone + 12 LC Duplex or 12 E2000 Simplex or 12 SC Simplex 1RU Front Plate	102001.14-CC
	12 LC Duplex or 12 E2000 Simplex or 12 SC Simplex 1RU Front Plate	102001.15-CC
	6 LC Duplex or 6 E2000 Simplex or 6 SC Simplex 1RU Front Plate	102001.16-CC
	12 E2000 Duplex Compact (RdM) 1RU Front Plate	102001.17-CC
	48 ST or 48 FC (D-hole) 1RU Front Plate	102001.18-CC
	1RU Dummy Plate	102001.19-CC
	24 E2000 Duplex Compact(RdM) Flagness 1RU Front Plate	102001.20-CC
	12 E2000 Duplex Compact(RdM) Screwable 1RU Front Plate	102001.21-CC
	24 E2000 Duplex Compact(RdM) Screwable 1RU Front Plate	102001.22-CC
	Freedom Base Plate for Screwable	102001.23-CC
	6SC Duplex Module(Screwable)	102001.23.01A-CC
	6SC Simplex Module(Screwable)	102001.23.01B-CC
	6ST or 6FC (D-hole) Module(Screwable)	102001.23.01C-CC
	Blank Module(Screwable)	102001.23.01D-CC
	4 Keystone Module(Screwable)	102001.23.01F-CC
	Freedom Base Plate for Snap Latch	102001.24-CC
	6SC Duplex Module(Snap Latch)	102001.24.01A-CC
	6SC Simplex Module(Snap Latch)	102001.24.01B-CC
	6ST or 6FC (D-hole) Module(Snap Latch)	102001.24.01C-CC
	Blank Module(Snap Latch)	102001.24.01D-CC
	4 Keystone Module(Snap Latch)	102001.24.01F-CC
	12 SC Duplex or 12 LC Quad Horizontal 1RU Front Plate	102001.25-CC
	24 LC Duplex or 24 SC Simplex Horizontal 1RU Front Plate	102001.26-CC
	6 LC Duplex or 6 SC Simplex Horizontal 1RU Front Plate	102001.27-CC
	12 SC Duplex or 12 LC Quad Angled 1RU Front Plate	102001.28-CC

### Ordering Guide



**Product Code**  
**102001-CC\***

Without front adapter plate  
order code



**Product Code**  
**102001.PC\*\*-CC**

Front adapter plate  
order code

Available different front adapter plates can be sold separately  
to reduce stock value for all type of connectors



**Product Code**  
**102001-LG.03/000000**

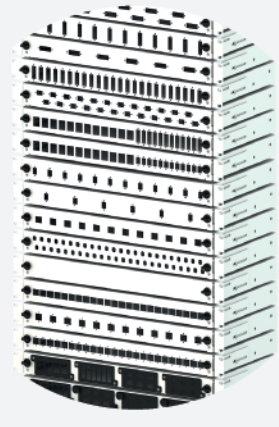
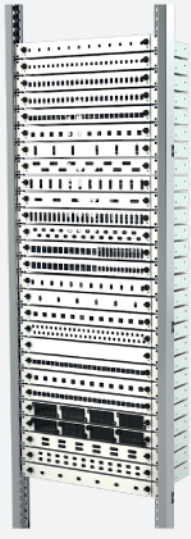
Assembled front adapter plate  
order code

\*CC= Colour code, \*\*PC= Adapter Plate code for customers to define while ordering.  
For more information about the product or accessories you can contact at [sales@alfafonet.com](mailto:sales@alfafonet.com)



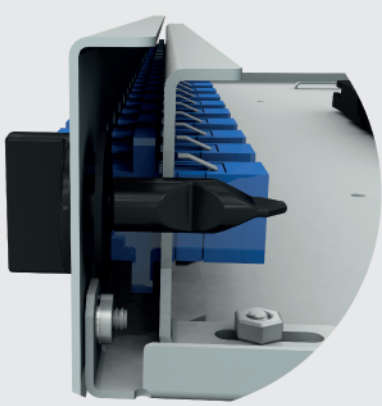
## OPTISLIDE 1RU FIBER OPTIC PATCH/SPLICE PANEL

### Key Features

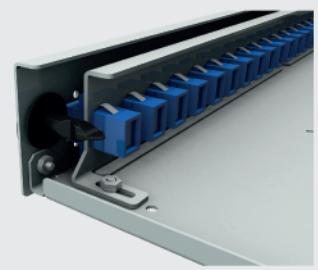


✓ **Modular adapter plates**

Available with different front plates (sold separately to reduce stock value) for all type of connectors



✓ **Optional double layer of front adapter plate**

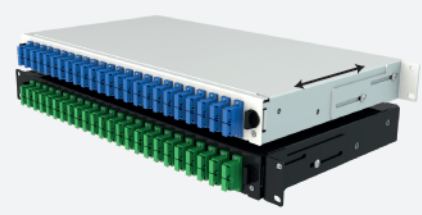


Order No\* 102001.97-CC  
Double Layer of Front Adapter Plate



Adjustable depth in rack cause of mounting brackets positioning

✓ **Adjustable Mounting Brackets and Rear Assembly**

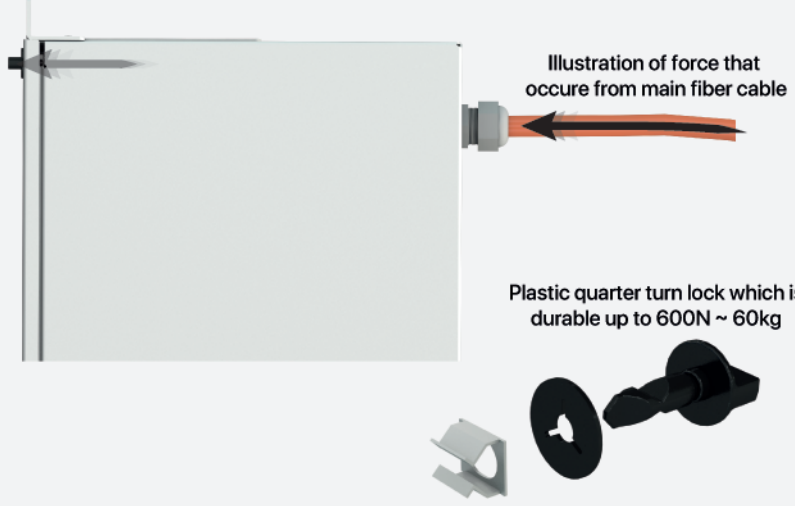


Rear assembly option to Rack

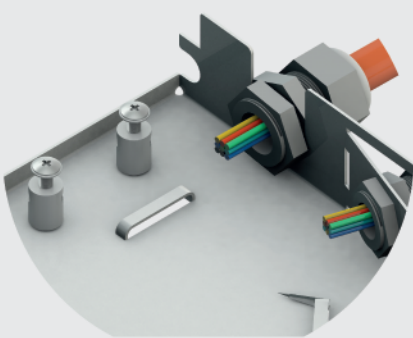
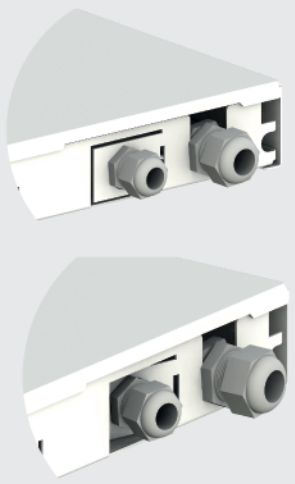


# OPTISLIDE 1RU FIBER TERMINATION PATCH/SPLICE PANEL

## Key Features



✓ Resistance to horizontal force up to 600N ~ 60kg



✓ Different Cable Entry options

PG16 , PG13.5 Cable Entry Hole Angled  
PG13.5 Cable Entry Hole

**OPTISLIDE 1RU FIBER TERMINATION PATCH/SPLICE PANEL**

**Options**

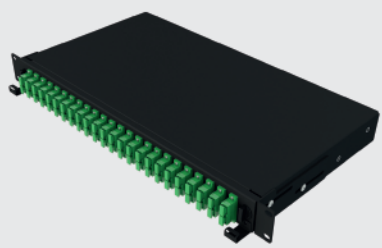
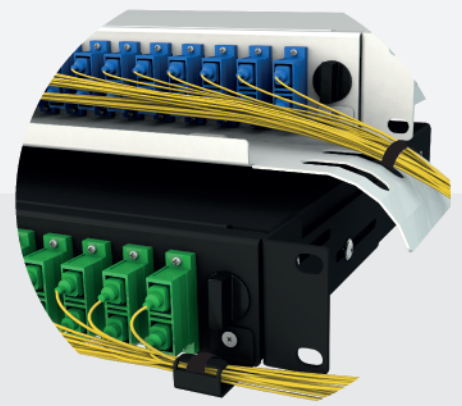


Front cable management part managing and fixing the cables properly

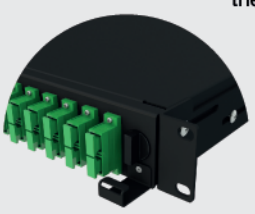


✓ **Front Cable Management Option**

Order No\* 102001.98-CC  
Front Cable Management Panel



Front cable management ring for holding the cables properly.

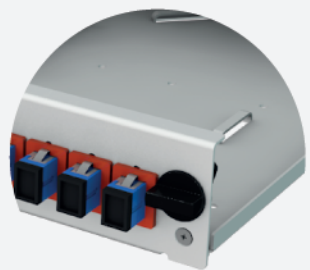


✓ **Front Cable Management Ring Option**

Order No\* 102001.99-CC  
Front Cable Management Ring



Screw assembly from back



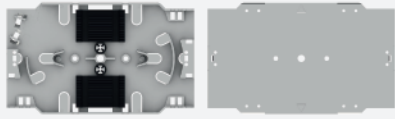
Fast Fit Adapter

✓ **Adapter Fixing Options**



**OPTISLIDE 1RU FIBER OPTIC PATCH/SPLICE PANEL**

**Splice Tray Options**



**ALF-TRY-01-ANT**  
(ANT Holder)



**ALF-TRY-01-FS**  
(Fusion Splice Holder)



Dimensions (with Cover) : 10 x 91.8 x 155 mm  
Body Dimensions : 8 x 91.8 x 155 mm  
Capacity : up to 24  
ANT & Fusion Splice Holder available



**ALF-TRY-02**

Dimensions (with cover) : 14.6 x 100 x 157 mm  
Dimensions : 11.6 x 100 x 157 mm  
Capacity : up to 24

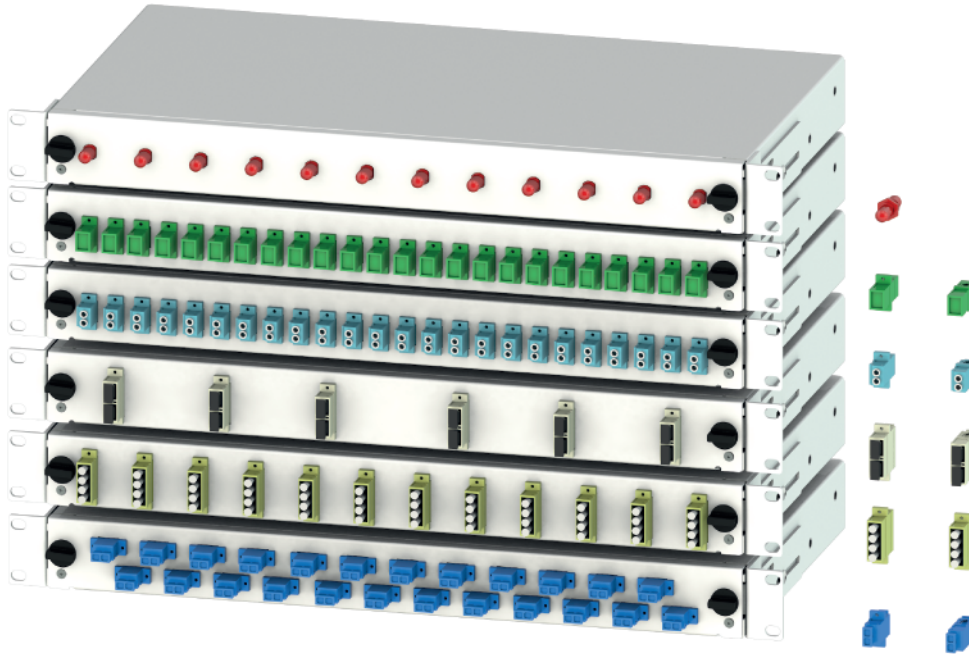


**ALF-TRY-06**

Dimensions (with cover) : 10.6 x 100 x 157 mm  
Dimensions : 10.6 x 100 x 157  
Capacity : up to 24

## OPTISLIDE 1RU FIBER OPTIC PATCH/SPLICE PANEL

### Adapter Series



#### LC Duplex

LC Duplex adapters are used to patch connect four LC connectors to each other.



#### LC Quad

LC Quad adapters are used to patch connect eight LC connectors to each other.



#### SC Simplex

SC Simplex adapters are used to patch connect two SC connectors to each other.



#### SC Duplex

SC Duplex adapters are used to patch connect four SC connectors to each other.



#### ST

ST adapters are used to patch connect two ST connectors to each other.



#### FC

FC adapters are used to patch connect two FC connectors to each other.



#### E2000

E200 adapters are used to patch connect two E2000 connector to each other.




#### LC Duplex Square

LC Duplex adapters are used to patch connect four LC connectors to each other.

## OPTISLIDE 1RU FIBER OPTIC PATCH/SPLICE PANEL

### Packaging Details

#### Standart Accesories (Set)

	PG16, PG13.5 Plastic Cable Gland 1 pcs.	Plastic Quarter Turn lock 2 pcs.	
	Adhesive Bunny Clips 6 pcs.	M3x7 Fixing Screw 5 pcs.	
	Tire wrap (2.5x100)mm 4 pcs.	M6 Cage Nut Set 1 pcs. (Optional)	



500x280x50 mm  
Box Weight: 2,830 kg



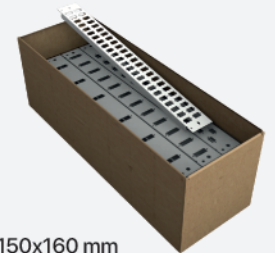
510x300x270 mm

1 Outer Box includes  
5 Optislide 1RU Fiber Termination Panel.



Each front plate wrapped  
in the transparent nylon bag

#### Front Plate Packacing



465x150x160 mm

1 Front Plate Box includes 50 plates.

1 EU Pallet includes;  
150 Optislide 1RU Fiber Termination Panel.  
EUR Pallet Weight: ~440 kg



1500mm



EUR pallet  
1200x800 mm